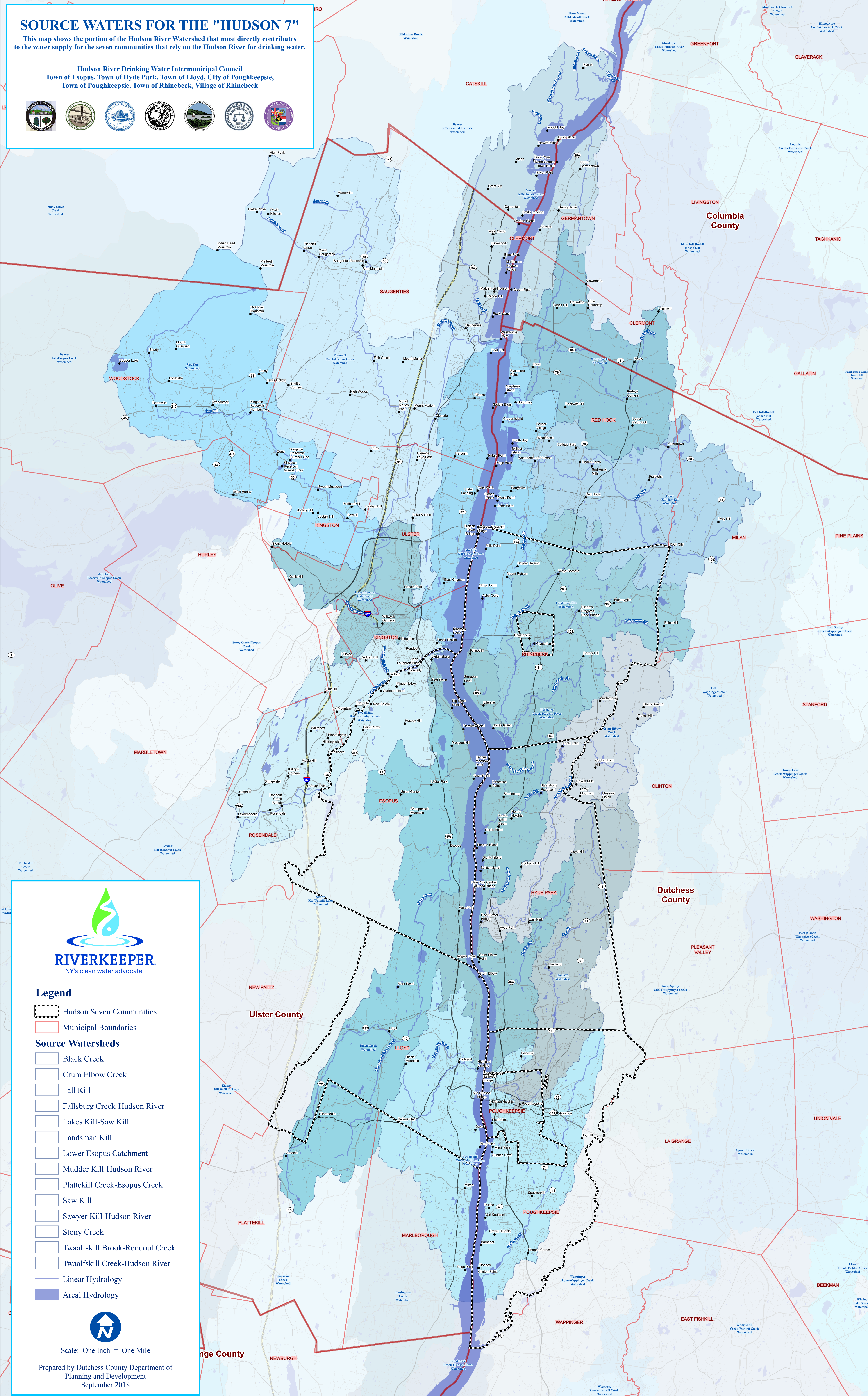


# SOURCE WATERS FOR THE "HUDSON 7"

This map shows the portion of the Hudson River Watershed that most directly contributes to the water supply for the seven communities that rely on the Hudson River for drinking water.

Hudson River Drinking Water Intermunicipal Council  
 Town of Esopus, Town of Hyde Park, Town of Lloyd, City of Poughkeepsie,  
 Town of Poughkeepsie, Town of Rhinebeck, Village of Rhinebeck



## Legend

- Hudson Seven Communities
- Municipal Boundaries
- Source Watersheds**
- Black Creek
- Crum Elbow Creek
- Fall Kill
- Fallsburg Creek-Hudson River
- Lakes Kill-Saw Kill
- Landsman Kill
- Lower Esopus Catchment
- Mudder Kill-Hudson River
- Plattekill Creek-Esopus Creek
- Saw Kill
- Sawyer Kill-Hudson River
- Stony Creek
- Twaalfskill Brook-Rondout Creek
- Twaalfskill Creek-Hudson River
- Linear Hydrology
- Areal Hydrology



Scale: One Inch = One Mile

Prepared by Dutchess County Department of Planning and Development  
 September 2018